

XS NEW HOLIDAY HOMES

Ideas competition with building option
2018_Thüringer Meer





PAGE 14

PAGE 16

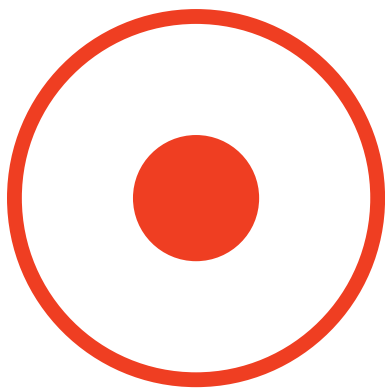
PAGE 18

PAGE 20

PAGE 22

PAGE 12

XS NEW HOLIDAY HOMES



PRELUDE

- 7 Introduction by Bodo Ramelow, Minister-President of the Free State of Thuringia

XS

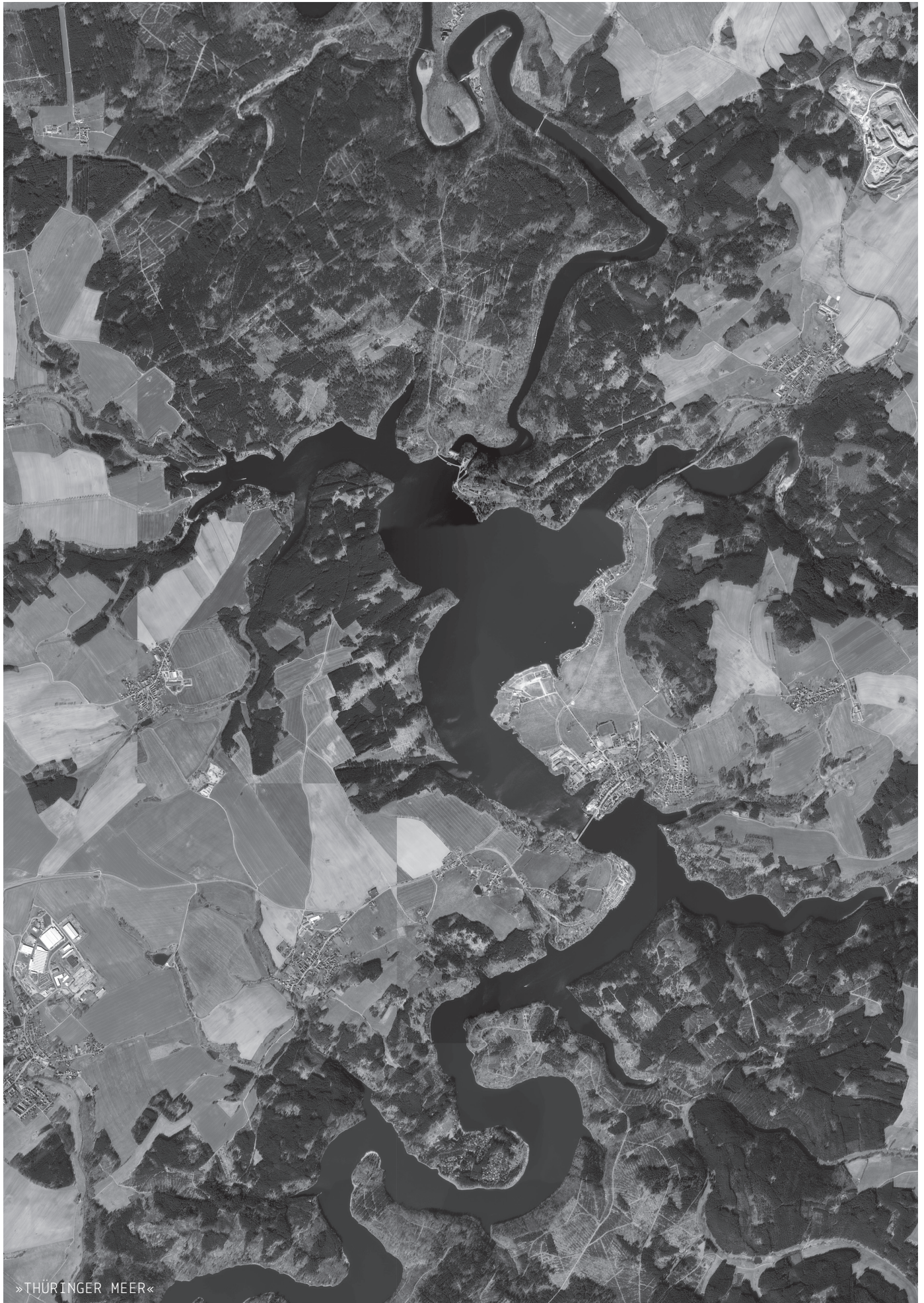
- 11 Competition brief
- 15 Competition organizers
- 17 The International Building Exhibition »IBA Thüringen«
- 19 Jury
- 21 Prizes
- 23 Schedule
- 25 English summary of requirements

COMPLETE COMPETITION ANNOUNCEMENT

- in German language available online -

Further information online:

www.xs-ideenwettbewerb.de



»THÜRINGER MEER«

THURINGIA, A POPULAR TOURIST DESTINATION

Text by Bodo Ramelow, Minister-President of the Free State of Thuringia

Excellent architecture marks a decisive factor for holiday making. Modern architecture and design correlating with scenic landscape formations play essential roles in high-quality contemporary holiday-making.

With more than 10 Mio overnight stays per year, Thuringian destinations belong to the most popular holiday destinations. Despite the high touristic potential with unique landforms, some regions seem to be entirely undiscovered. Thuringia nursed its image of the so-called »Green Heart« of Germany as touristic marketing concept which is symbolically linked to images from untouched nature, the woods, to German Mystic.

Thuringia as holiday destination stands for an understanding as a generous host, nurtured by both culture and nature. In addition to the Thuringian Forest and the rich cultural heritage, more and more urban and rural areas discover and develop their very own characteristic visitability and experienceability. The International Building Exhibition Thuringia pays attention to historic as well as latest developments under the headline »StadtLand«.

The competition does not seek for extraordinariness, but for a tourism featuring the conscious use of resources and energy, reflecting social responsibility and diversity in an excellently designed environment.

I am looking forward to your contributions that meet this significant challenge in an extra-small scale.

A handwritten signature in black ink, appearing to read 'Bodo R.', with a stylized, flowing script.

Bodo Ramelow, Minister-President of the Free State of Thuringia

XS

This architecture competition is dedicated to small house types. Especially in tourism concepts, small-scale homes might meet best visitors expectations in authentic situations.

A small individually designed house can be a stronger contribution, model and statement to the architectural production of our time than a large-scale project.

XS is not only meant to be a scale. XS is a programme.

The competition seeks for contributions for both exemplary and temporary homes using local and regional resources, epitomizing the sensible relationship with culture and nature representing and raising technical and digital awareness, as well as being of the highest architectural and innovative quality.

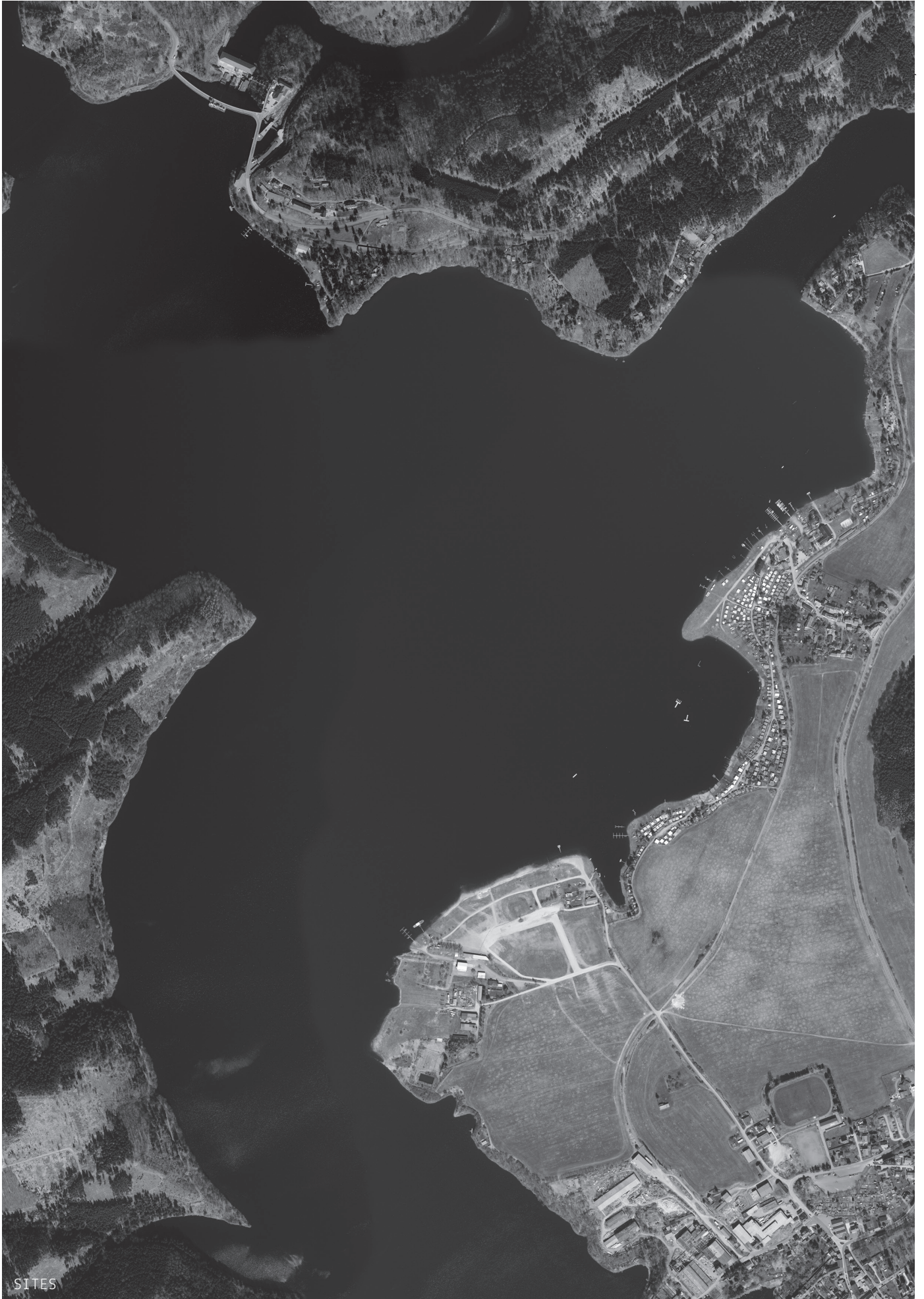
COMPETITION BRIEF

Small-scale = high impact. A small house conveys a site in all scales: from the traditional fireplace through the landscape view of the water and the horizon. The little house sets the frame for the whole home experience at Thüringer Meer, being an excellent and temporary concept for both living and the building process at once. By this, the small house becomes a container for big ideas.

Scale XS

The ideas competition aims for well-designed small houses. With a design process starting from the smallest piece, it contains the steps from the tiny detail to the place as a whole. For the competition entry there are three different, but equally essential stages:

- the **house** – the architecture of the home and adoption of the place,
- the house **cluster** or settlement,
- the **landscape and urban design** – corresponding to the surroundings and the terrain.



SITES

The Programme

The quality of architecture is deeply rooted in an innovative programme. The initial setting relates to the image of an exemplary and temporary home at Thüringer Meer being permanently implemented here. All design and building work obey the following fundamental principles:

- innovative and moderate **construction**
- use of regionally available building **materials** and **crafts**
- **prefabrication** and **modularization** of building components to reduce construction time
- **transportability** (e. g. load of a 40-ton truck)
- conceptual, financial, and technical **feasibility**.

Two sites

In preparation of the competition, various locations were evaluated and typical landscape identified. In correspondence to the typological approach, two very different but typical places are the scenes for the new, exemplary and temporary homes to chose from:

Site A Situated close to the dam “Bleilochtsperre” above a steep coastline. Undulating woodlands form a place for thoughtful interventions, staging the view over the bluff to the distance.

Site B Shallow grasslands at the seaside include a working shipyard. Industrial buildings and a pier may stage the access to water in different ways, including a boat harbour.



SITE A

COMPETITION ORGANIZERS

A unique cooperation of the Free State of Thuringia, the International Building Exhibition (IBA) Thüringen and Foundation of Baukultur Thüringen with local municipalities

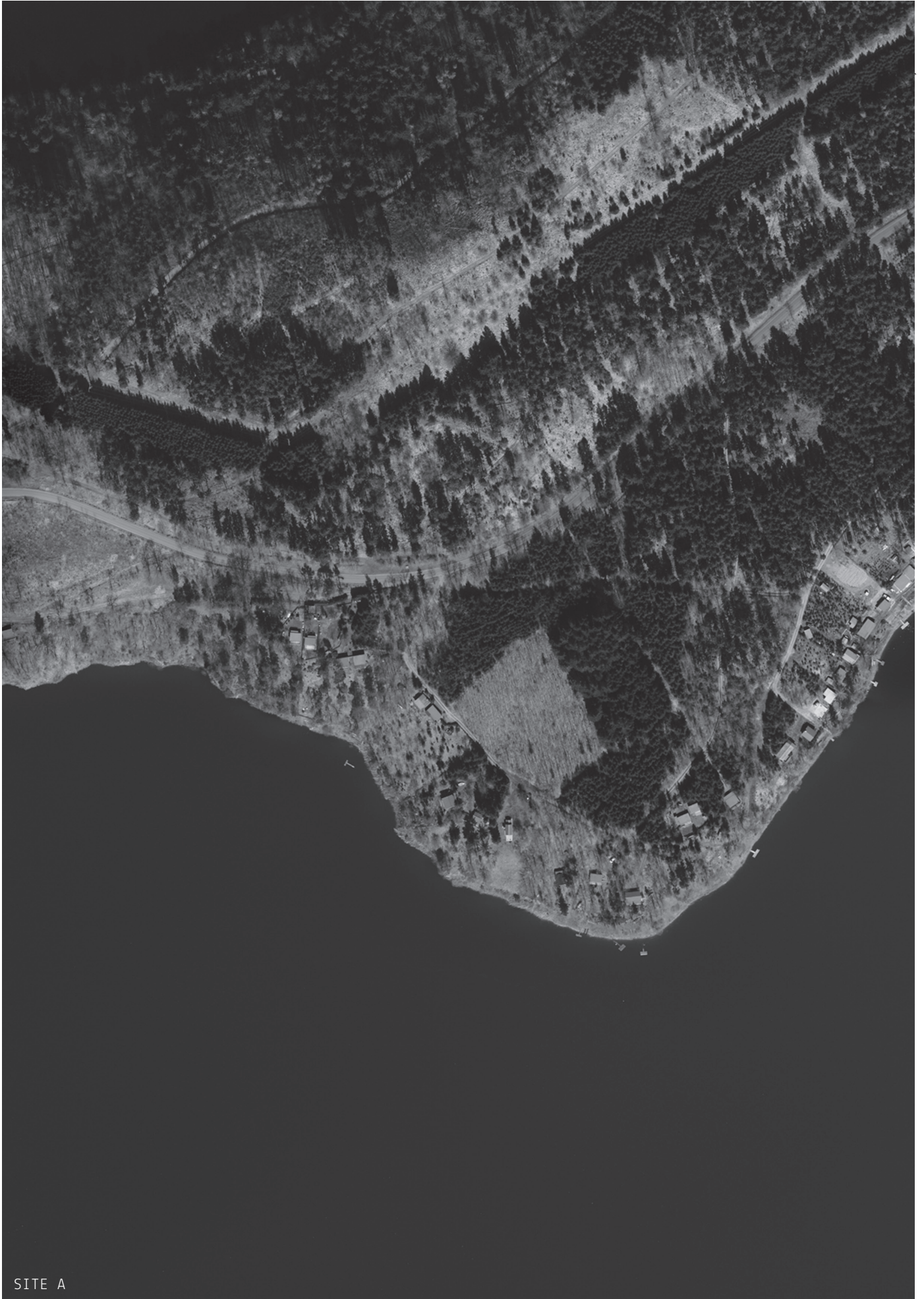
The Free State of Thuringia shares a considerable interest in developing exemplary approaches that uncover the tourist potential of the region. An integrated and sustainable tourist strategy in the core areas »Thüringer Meer« (»Thuringian Sea«) and »Thüringer Wald« (»Thuringian Forest«) secure the basis for enduring future developments.

The ideas competition, and subsequent execution of landscape and architectural designs, aims for model projects that highlight the utmost potential of both innovative and regional approaches. Integrated architectural proposals in unique landscapes, as well as brave investors and operators, are the best ingredients for exceeding touristic objectives at the Thuringian »seaside«.

Launching the **International Building Exhibition (IBA)** the Free State of Thuringia chose to deploy a particular instrument of urban and regional planning to develop and implement exemplary solutions and prototypes.

The Baukultur Foundation Thuringia (**Stiftung Baukultur Thüringen**) is both engaged in the competition process and its supervision and acts as an agent for deliberate planning and building practice.

The municipalities of **Saalburg-Ebersdorf** and **Schleiz** play essential roles as partners providing local and regional incorporation of the process as well as legal conditions for the model projects.



SITE A

THE INTERNATIONAL BUILDING EXHIBITION (IBA) THÜRINGEN

From 2012 until 2023, the International Building Exhibition will develop projects in and for Thuringia, innovative and experimental to emulate and reproduce!

What drives us – our project processes are tailored to the small-scale settlement pattern of the Free State of Thuringia. We foster and develop resource-friendly projects that strengthen local communities in the rural-urban StadtLand of Thuringia, and identify new approaches to connecting and cultivating bonds between the town and country.

How we work – we motivate project partners to undertake innovative StadtLand projects, support cooperative processes and promote excellent design. We work in partnership across boundaries and disciplines, locally and internationally, facilitating through salons, conferences and exhibitions.

What characterises IBA projects – currently we support 30 StadtLand locations: 23 IBA candidates and seven IBA projects. IBA projects are innovative in character, excellent in design and feasible and sustainable. The first IBA project was completed in June 2017: the art installation “organ” by Carsten Nicolai in the Chapel of St. Anna in Krobitz. StadtLand projects and their development and implementation have three key areas of focus:

REUSE: Vacant Properties We reactivate vacant buildings throughout the state, adapting and combining new models of usage with other building standards.

DEVELOP: Collective Responsibility We support bold initiatives and help cultivate new forms of collaboration between public administration, the private sector and civil society.

BUILD: Modern Province We develop new projects in urban and rural contexts, realise new experimental buildings and promote building culture as a hallmark of Thuringia.



SITE B

JURY

Stephan Petermann

AMO Associate at Office for Metropolitan Architecture (O.M.A.)
and IBA Advisory Board

Anna Lundqvist

Landscape Architect and Professor for Landscape Architecture
at Brandenburg Technical University Cottbus-Senftenberg

Katinka Temme

Architect and Professor for Analogue Architecture at
University of Applied Sciences Augsburg

Bernd Rudolf

Architect, Designer, Dean at Bauhaus-Universität Weimar and
IBA Advisory Board

Dr. Marta Doehler-Behzadi

Managing Director of International Building Exhibition (IBA)
Thüringen

Prof. em. Dr.-Ing. Gerd Zimmermann

President of Baukultur Foundation Thüringen

Dr. Klaus Sühl

Undersecretary at Thuringian Ministry of Infrastructure and
Agriculture

Volker Ortwig

Mayor of Stadt Saalburg-Ebersdorf

Marko Bias

Mayor of Stadt Schleiz

Claus Anders

Representative Landowner/Investor

Fredi Vogler

Representative Landowner/Investor



SITE B

PRIZES & MORE

1st Prize

€7.500,00

2nd Prize

€5.000,00

3rd Prize

€3.000,00

Acknowledgements

€8.000,00

Extra Benefits

- **exhibition** of **all** excellent contributions
- **Networking** with local partners
- Building of a **Prototype** in 2019
- **Presentation** at IBA Interim Presentation and Bauhaus Centennial in 2019
- **Catalog of high-quality holiday homes** in Thuringia, e.g. with a web platform or with existing platforms



SITE B

SCHEDULE

July 10, 2018

Competition Release
(online www.xs-ideenwettbewerb.de)

July 30, 2018

Follow-Up Colloquium in Saalburg-Ebersdorf

September 17, 2018

Submission

September 27/28, 2018

Jury Session

October 6, 2018

Award Ceremony and Public Presentation

Further information online:
www.xs-ideenwettbewerb.de

XS NEW HOLIDAY HOMES

ENGLISH SUMMARY OF REQUIREMENTS

COMPETITION PROCEDURE (SUMMARY)

Application and Recognition of RPW 2013

The ideas competition is carried out in compliance with German state regulations, the rules of RPW 2013 apply ("Regeln für Planungswettbewerbe"). The competition is registered at Architektenkammer Thüringen (federal Chamber of Architects in Thuringia) with the RPW registration number 09/2018. All parties recognize the full content of the competition brief.

Competition Type

The competition is an open ideas competition. Submissions may be handed in anonymously in German or English language.

Competition Parties

1. Competition Organizers

Sponsor is the Free State of Thuringia with the Ministry of Infrastructure and Agriculture and the Ministry of Economics, Science and the Digital Society, in cooperation with the International Building Exhibition Thuringia (IBA Thüringen), the Baukultur Foundation Thuringia, and the municipalities of Saalburg-Ebersdorf and Schleiz.

The competition procedure is managed by the Baukultur Foundation Thuringia.

2. Competitors

The competition is open for architects, landscape architects, and urban designers, that work in the fields of housing, leisure spaces, and landscape design with high expertise in building construction as well as innovative materials, building procedures, and sustainable energy and resource cycles. Competitors chose to work out one proposal for either one of the sites A or B.

3. Eligibility

Professionally trained and in their home countries registered architects and landscape architects from EEA/WTO/GPA states are eligible to take in the competition.

The organisers recommend teamwork of architects (in charge) and landscape architects. Teams or firms have to have at least one eligible team member. In competitor cooperations, all cooperators need to be qualified.

4. Jury, Experts and Preliminary Examination

The jury passed this brief and will meet in a closed session to determine the winners and acknowledgements out of the field of all qualified submissions.

Expert judges are:

Dr Marta Doehler-Behzadi, Managing Director of IBA Thüringen

Prof. Anna Lundqvist, Landscape Architect and Professor, BTU Cottbus-Senftenberg

Stephan Petermann, AMO Associate Office for Metropolitan Architecture (OMA) and IBA Board of Advisors

Prof. Bernd Rudolf, Architect, Designer, Dean at the Bauhaus-Universität Weimar and IBA Board of Advisors

Prof. Katinka Temme, Architect and Professor, University of Applied Sciences Augsburg

Prof. em. Dr Gerd Zimmermann, President of Baukultur Foundation Thuringia, Professor and Director (em.) of Bauhaus-Universität Weimar

Permanently present deputy expert judges are:
Tobias Haag, Project Manager IBA Thüringen
Heike Roos, Landscape Architect

Procedural judges are:
Claus Anders, Representative of the Developers
Marko Bias, Mayor of Schleiz
Prof. Olaf Langlotz, Representative of the Thuringian Ministry of Infrastructure and Agriculture
Volker Ortwig, Mayer of Saalburg-Ebersdorf
Fredi Vogler, Representative of the Developers

Permanently present deputy procedural judges are:
Mario Lerch, Representative of the Thuringian Ministry of Infrastructure and Agriculture
Thomas Haberkern, Schleiz Building Authority
Bernd Rudolph, Saalburg-Ebersdorf Building Authority

Expert advisors are:
Peter Apel, Vattenfall Water Power
Frank Drehmann, Representative of the Municipal Working Group "Thuringian Sea"
Dr Thomas Knoll, Ministry of Economics, Science and the Digital Society
Alexander Mayrhofer, Thuringian Tourism Cooperation

Preliminary examination by Baukultur Foundation Thüringen (Jessica Christoph, Katja Gehlfuß, Dr Ulrich Wieler).

Prizes

It is the jury's right to finally and incontestably distribute the total sum of €23.500,- to qualified submissions. The result may include all possible designs that fit a consistent urban and landscape on the sites. The jury will give recommendations for the layout and distribution of award-winning designs.

Entries

All entries are handed in anonymously, providing an individual number consisting of six digits in the upper right corner of all documents. Every competitor is allowed to submit one entry. The following shall be part of the entry; exceeding material may lead to exclusion.

- | | |
|---------------|--|
| 1: 33 1/3 | Building design , floor plans, elevations, and sections including construction details and material specifications |
| without scale | A concise main illustration for the building concept as a three-dimensional representation, e.g. the principle arrangement, axonometric, etc. |
| 1:200 | Excerpt of the settlement /cluster/colony/estate with ground floor plans of the buildings including the outside-inside relation, maybe a connection to shared services or existing buildings, etc. |
| 1:1.000 | Site plan including roads, paths, further infrastructure, etc. |
| without scale | Illustrative/narrative sketches or diagrams Concept idea and design description text (max. 2 DIN A4) A rough estimate of the costs as part of the concept idea (e. g. DIN 276-1, groups 300 (building construction) + 400 (technical installation), max. 1 DIN A4) |

Requirements:

- Additionally, the filled form “Verfassererklärung” (enclosure no. 7, author’s declaration) needs to be handed in a neutral, opaque, sealed envelope providing the individual 6-digit number on the outside.
- A short text description shall be provided on the drawings. Site plan and floor plans shall be with north to the top of the drawing.
- Proposals must be submitted in roll-shape. Coloured drawings may be accepted.
- Every entry consists of two sheets of DIN A0 paper in upright position (portrait). One sheet contains the building design (scale 1:33 1/3) including the main illustration. The second sheet gathers all other information.
- All entry information shall be submitted in digital form, too (CD ROM, USB stick).

Assessment Criteria for Concept and Design

- Overall design concept/**atmosphere** at these specific sites
- Holiday home concept, **design idea** of the single unit and the ensemble
Quality of the single house regarding the inside-outside relation, and the organisation of private spheres connected to public spaces
- **Landscape design** of a natural environment at the “Thuringian Sea”, connection to the surroundings
- **Innovation** and **excellence** as a result of adequacy and appropriateness, aspects of long-term management (sustainability) regarding the particular site and its specific use
- Application of reasonable **construction methods** and regionally available materials, e.g. wood
- Comprehensible perspective to engage **local crafts, firms and partners**
- **Feasibility**, modularisation, prefabrication, transportability (ca. load of a 40-ton truck) of building components to reduce construction time in a highly sensitive environment
- The **design concept for a settlement** including functional arrangements of optional add-ons, infrastructure and logistic connections
- **Economic feasibility** regarding material choice and procurement, construction methods and building operations
- The plausibility of external and internal development as well as access and **stationary traffic**

Competition documents

The following documents will be provided on the website www.xs-ideenwettbewerb.de:

- Competition brief (PDF)
- Digital cadastral map excerpt (PDF, DWG)
- Site plans with specific information to the sites (PDF, DWG)
- Aerial photographs (JPG)
- Regional Development Concept (PDF, available in German only)
- Urban land-use plan (PDF)
- Author’s declaration form

The documents are provided for the competition only. Competitors declare that they will destroy the documents and delete the data after the end of the competition.

Schedule

Current Information will be provided on the website www.xs-ideenwettbewerb.de.

Competition Release

10.07.2018 online: www.xs-ideenwettbewerb.de

Follow-Up Colloquium

30.07.2018, 10 a.m. at Hotel Fürstenhöhe, Am Kulm 2, Saalburg-Ebersdorf

Questions may be sent to wieler@baukultur-thuringen.de and christoph@baukultur-thuringen.de by 27.07.2018. Subsequently, the answers and additional documents will be provided on the website.

Submission of all entries

All entries shall be submitted no later than 17.09.2018, 6 p.m.

Submission address is:

Internationale Bauausstellung Thüringen GmbH
Egon-Eiermann-Bau
Auenstraße 11
99510 Apolda
Germany

Keyword: XS Ideenwettbewerb

Jury Session

26./27.09.2018

Award Ceremony and Public Presentation

06.10.2018

Exact time and place will be announced online.

Additional information for Site B (»Werft«)

The site places the festival »SonneMondSterne« which takes place August 10-12, 2018. The festival organisers expect 45.000 visitors.

Admission of entries

All entries will be admitted that

- comply with formal conditions,
- correspond to the listed scope of drawings,
- are submitted on time and entirely anonymously.

Further processing and copyright

The competition aims to develop the selected sites as well as create a catalogue of outstanding holiday homes. The competition organizers will contact all award-winning competitors. In case of cooperation and commission, no additional fee will be paid for planning rendered by the proposal.

Award-winning entries will become property of the competition organisers.

Competitors give their full consent for the unrestricted right of use for all submitted documents to be part of exhibitions, a catalogue, and PR work of the competition organisers.

IMPRINT

Internationale Bauausstellung
Thüringen GmbH
Egon-Eiermann-Bau
Auenstraße 11
99510 Apolda, Germany

Stadt Saalburg-Ebersdorf
Parkstraße 1
07929 Saalburg-Ebersdorf, Germany

Stadt Schleiz
Bahnhofstraße 1
07907 Schleiz, Germany

Stiftung Baukultur Thüringen
Rudolstädter Straße 7
99428 Weimar-Gelmeroda, Germany

Thüringer Ministerium für Infrastruktur
und Landwirtschaft (TMIL)
Werner-Seelenbinder-Straße 8
99096 Erfurt, Germany

Thüringer Ministerium für Wirtschaft,
Wissenschaft und Digitale Gesellschaft
Max-Reger-Straße 4-8
99096 Erfurt, Germany

Project Management
Simone Strähle (TMIL)
Tobias Haag (IBA Thüringen)
Dr. Ulrich Wieler (Stiftung Baukultur
Thüringen)

Concept
Tobias Haag (IBA Thüringen)
Dr. Ulrich Wieler (Stiftung Baukultur)

Design
Tobias Haag (IBA Thüringen)
Jessica Christoph, Dr. Ulrich Wieler
(Stiftung Baukultur Thüringen)

Translation
Jessica Christoph

Credits
© GDI-Th



